

A decorative graphic composed of various colored circles (green, blue, red, yellow) and rectangles (red, yellow) arranged in a stylized 'W' shape that frames the central text.

Welcome

Western Reserve
Reading Project's

on-campus brain imaging visit.

Welcome

We are so glad you are participating in our study.



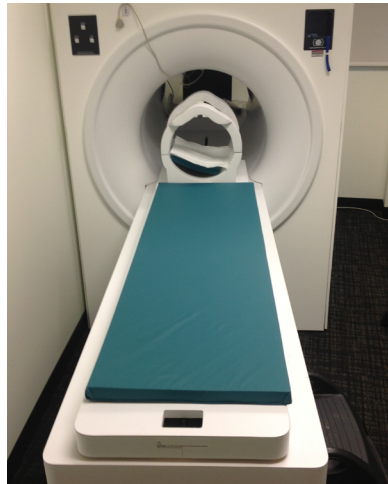
Meet Our Testers

Once you arrive on campus, they will guide you through the consent and assent forms, which give us permission to include you in our study. Our research testers will answer any questions you have about MRI (brain imaging) or any other part of your visit.



Here is our Mock Scanner

In this room, we will practice what it is like to be in the actual MRI machine. The mock scanner makes all the same movements and noises as the real scanner, and you will be able to ask questions about the activities you will complete in the scanner.



The Imaging Center

Once you have finished practicing in the mock scanner you are ready to begin testing in the actual scanner. One twin will begin testing with the paper and pencil based activities, while the other twin prepares to test in the scanner. While the twins are testing, parents are welcome to relax in our waiting room, and enjoy the snacks we have provided!



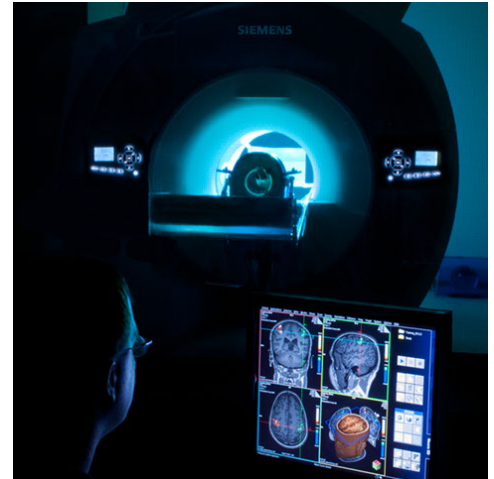
Safety Screening

Before entering the MRI machine, each twin will be screened for metal. At that time, we will also record the twins' height and weight. We suggest that the twins wear metal-free, comfortable clothes during the MRI scan. If you or your family needs to store clothing or other items, a locker is available for your use.



Scanning

Once we have made sure that it is safe for the twins to be in the MRI machine, we will begin the scan. The entire scan will last about one and a half hours.



Our Control Room

During each scan, parents are welcome to watch their child in the scanner from the control room. Our trained MRI technician will be able to communicate with your child at all times using a special intercom throughout the entire process.



Testing

While the first twin is being scanned the second twin will be doing paper and pencil tests. This testing session will last an hour and a half as well.



Lunch

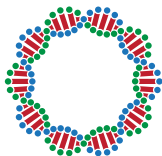
When the twins are done with the first part of the visit we will take a break for lunch. This is provided to you as a courtesy for participating. Following lunch, the twins will switch places so that each twin completes the MRI scan and paper and pencil activities during your visit.



When both twins are done with the testing, your family will have completed the study! Thank you once again for your ongoing participation, and if you have any questions please contact us:

The Ohio State University
205 Psychology Building
1835 Neil Avenue
Columbus, Ohio 43210
1-866-258-8411
wrrp@osu.edu





Learning Disabilities
Innovation Hub



Western Reserve Reading Project

